

**OPERATING AND SERVICE MANUAL SUPPLEMENT**

**SUPPLEMENT  
FOR  
10529A LOGIC COMPARATOR**

**Programmable Socket Card 10529-60014 Series 1424A**

For use with Logic Comparator Operating and Service Manual 10529-90005.

Copyright      HEWLETT-PACKARD COMPANY      1974  
5301 STEVENS CREEK BLVD., SANTA CLARA, CALIF. 95050

**MANUAL PART NUMBER 10529-90007**  
**MICROFICHE PART NUMBER 10529-90008**

**Printed: APR 1974**

**PRINTED IN U.S.A.**



**HEWLETT  
PACKARD**

## **CERTIFICATION**

*The Hewlett-Packard Company certifies that this instrument was thoroughly tested and inspected and found to meet its published specifications when it was shipped from the factory. The Hewlett-Packard Company further certifies that its calibration measurements are traceable to the U.S. National Bureau of Standards to the extent allowed by the Bureau's calibration facility.*

## **WARRANTY AND ASSISTANCE**

All Hewlett-Packard products are warranted against defects in materials and workmanship. This warranty applies for one year from the date of delivery, or, in the case of certain major components listed in the operating manual, for the specified period. We will repair or replace products which prove to be defective during the warranty period provided they are returned to Hewlett-Packard. No other warranty is expressed or implied. We are not liable for consequential damages.

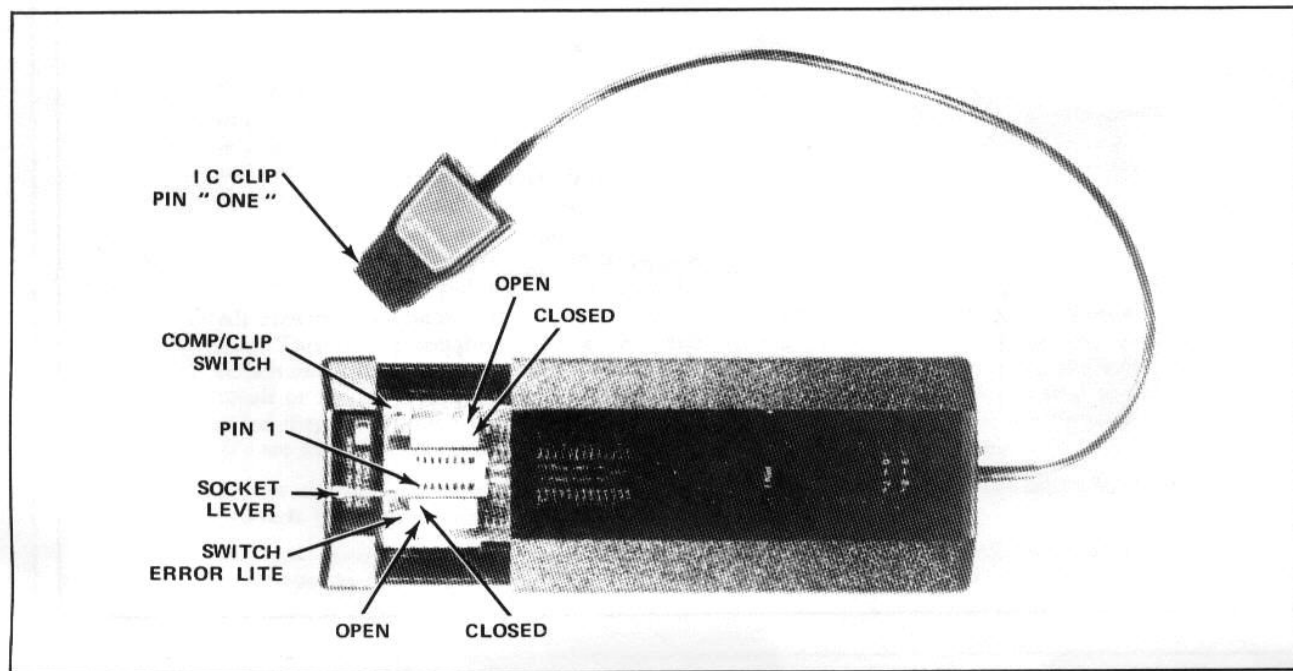
Service contracts or customer assistance agreements are available for Hewlett-Packard products that require maintenance and repair on-site.

For any assistance, contact your nearest Hewlett-Packard Sales and Service Office. Addresses are provided at the back of this manual.

**TABLE OF CONTENTS**

	Page
Introduction .....	1
Specifications .....	1
Description .....	1
Operation .....	2
Logic Comparator Operation .....	2
Logic Clip Operation .....	3
Failure Detection .....	4
Theory of Operation .....	5
Service Information .....	5

Figure 1. Socket Card



Model 10529A

## INTRODUCTION

This supplement covers specifications, operating instructions, theory, and service information for Programmable Socket Card 10529-60014. Use this supplement with the 10529A Operating and Service Manual (part number 10529-90005).

## SPECIFICATIONS

The following specifications change when the socket card is used with the 10529A Logic Comparator. All other specifications are as listed in Table 1-1 of the 10529A manual.

**Input Threshold:**

1.8 volts nominal, TTL or DTL compatible.

**Sensitivity:**

Error Sensitivity: 300 nanoseconds, errors greater than this are detected and stretched to at least 0.1 seconds.

## DESCRIPTION

The 10529-60014 Programmable Socket Card extends the usefulness of the 10529A Logic Comparator by allowing rapid test set-ups for seldom used IC's. The socket card also provides a Logic Clip function by displaying the status of each of the 14 or 16 pins of an IC under test.

Programming for a specific IC is easily accomplished. Two different methods are available. First the socket card included with the Comparator is inserted in the Comparator drawer. Outputs of the particular IC to be tested are selected via 16 miniature switches which tell the comparator which pins of the reference IC are to be allowed to respond freely. The reference IC is then inserted into the socket and locked into place. Any new IC may be set up in seconds. Alternatively, if specific IC types are to be tested repeatedly, the reference IC may be soldered into one of the reference cards provided with the Comparator. The reference card is programmed in minutes by opening the connections between the test and reference IC's outputs and solder bridging Vcc and ground. The socket card automatically seeks Vcc and ground. Ten blank

reference cards and the socket card are included with each Comparator.

The socket card also provides a Logic Clip function. In addition to the display of the instantaneous states of the 14 or 16 pins of the IC in the circuit via the Comparator's 16 LED's (one per pin), the Comparator-Clip also provides stretching on each pin. Thus intermittent highs and lows of 300 nanoseconds or longer may be detected. (See Logic Clip Operation.)

All operating power for the logic comparator is drawn from the circuit under test through the IC clip. No batteries or line power is used. The reference IC card has solderable connections to provide operating power to the comparator from the circuit being tested. The programmable socket card powers the logic comparator from the circuit under test by automatically locating Vcc and ground pins of the IC. Integrated circuits in the logic comparator are low-power TTL units to keep power consumption low.

Before the comparator is used to test an IC in operating equipment, one reference IC must be installed

on a 10529-20005 reference IC card, or into the reference socket of the programmable socket card 10529-60014. The reference IC must be the same type as the IC to be tested, and a known good IC.

## OPERATION

The following procedure describes how to use the Logic Comparator with the Programmable Socket Card.

### Logic Comparator Operation

a. Pull drawer out of comparator case until drawer stops are reached - then put socket board in opening (see Figure 1 for correct position of socket card). Push drawer back into comparator case. Set the COMP/CLIP switch to the COMP position.

b. Check location of Pin 1 of the reference IC and match it to Pin 1 on the socket card (see Figure 1). The socket lever must be put in the vertical position while installing the IC in the socket. Put reference IC pins into the correct holes of the socket. To lock the

IC into the socket, push the socket lever into the horizontal position.

c. Identify the output pins of the reference IC. Set all output pin program switches to the open position (away from the socket). Place all other switches to the closed position (towards the socket).

d. The reference IC is now ready for use in the comparator.

e. Put the IC connector clip on the IC to be tested. Be sure to position the IC connector clip pin 1 index mark with pin 1 of the IC to be tested (see Figure 1).

f. The comparator "ON" light should illuminate.

g. If any of the 16 LED's light, the logic levels at that pin of the reference IC and the IC being tested are different. Since the reference IC is "known good" the fault is in the IC being tested.

### Logic Clip Operation

The following is the procedure for using the Logic Comparator as a Logic Clip:

a. Pull drawer out of comparator case until drawer stops are reached - then put socket board in opening (see Figure 1 for correct position of socket card). Push drawer back into comparator case.

b. Set the COMP/CLIP switch to the CLIP position.

c. Set all program switches to the open position (away from the socket).

d. Put the connector clip on IC to be tested. Be sure to position the IC connector clip pin 1 index mark with pin 1 of the IC to be tested.

### NOTE

If the SWITCH ERROR light on the Socket Card illuminates, check that all switches are set to the open position. The light ON indicates a short between Vcc and common through one of the switches.

e. The comparator "ON" LED should illuminate. The 16 LED's now display the "high" and "low" logic levels of the corresponding IC pins. An "ON" LED

represents a logic "high" while an "off" LED represents a logic "low". Positive pulses will be stretched and displayed as an "ON" LED for a minimum of 50 ms. Negative pulses will not be stretched. If a pin is pulsing, the corresponding LED will flash "ON" and "OFF" or appear as a static "High" depending on the frequency. These two conditions are differentiated in step "f".

f. With the COMP/CLIP switch set to the COMP position, all "low" logic levels will be displayed as "ON" LED's and all "high" logic levels will be displayed as "OFF" LED's. Negative pulses will be stretched and displayed as "ON" LED's for a minimum of 50 ms. Positive pulses will not be stretched. If a pin is pulsing, the corresponding LED will flash "ON" and "OFF" or appear as a static "low" depending on the frequency. These two conditions are differentiated in "e" above.

#### **Failure Detection**

The following procedure is useful in determining the nature of the failure detected by the comparator:

There are two general types of Logic Circuit failure: a static failure and a dynamic failure.

The static failure is the result of a node continuously held high or low. This is caused by an output gate failure or the failure of an input gate tied to the node. Other static failures occur when the node is loaded down by circuits that are not intended to draw current from that node. These faults are typically caused by problems such as a solder bridge or external wiring faults.

The dynamic failure is typified by a node with signal activity that does not follow some prescribed truth table. This type failure is normally identified by a deviation of IC operation from the truth table. Two other possibilities however must be considered before any IC's are replaced: the failure of an input gate on the node and the unwanted connection to the node.

Use the following procedure to determine the nature of the failure.

a. Use the comparator as explained above (see section Logic Comparator operation). Note all failed pin numbers.



b. Use the comparator with socket card as a Logic Clip and observe failed pin numbers of step a. All LED's that are off represent pins that are stuck low indicating a probable static type failure. All that are pulsing or flashing have pulse activity which may indicate a dynamic failure. All pins that are high may be high or have pulse activity.

To differentiate between the last two states, set the COMP/CLIP switch to COMP. All failed pins that are now pulsing have pulse activity (which may indicate a dynamic failure), while all others are high.

## THEORY OF OPERATION

### Programmable Socket Card.

Figure 2 is a schematic diagram of the socket card. The card provides the following functions:

- 1) Connects Vcc and common of the test IC with the corresponding Vcc and common pins of the Comparator.
- 2) Permits comparator operation in the Logic Clip mode as well as the normal comparator mode.

The B input line with the highest voltage will be tied to the Vcc bus through its forward biased diode. The B input line with the lowest voltage will be tied to the Com Bus through its forward biased diode. S3 is used to select either Clip or Comparator mode of operation. In the Clip mode CR19-22 and CR40-51 are tied to the common bus through DS1. DS1 provides protection against operation where an S1 or S2 switch is closed, applying a positive voltage from the B line to the A line, forward biasing the diode. When S3 is in the Comparator mode, CR19-22 and CR40-51 are tied to the Vcc bus.

When S3 is in the Clip mode CR19-22 and CR40-51 are tied to the common bus through DS1. S1 1-8 and S2 1-8 provide a means of paralleling the Ref IC inputs with those of the IC under test. Open switches enable comparison of the Reference and test IC.

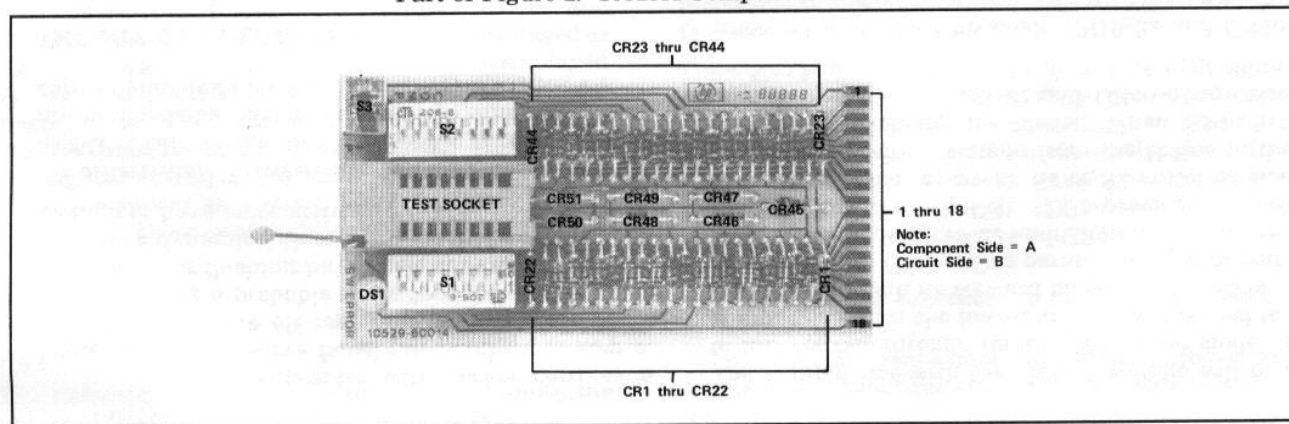
## SERVICE INFORMATION

Table 1 lists replaceable parts for the Programmable Socket Card. A component locator and schematic diagram are shown in Figure 2.

Table 1. Replaceable Parts

Ref. Desig.	HP Part No.	Qty.	Description	Ref. Desig.	HP Part No.	Qty.	Description
DS 1	2140-0420	1	LAMP	S1S2	3101-1856	2	SW.-PROGRAM
For DS1	1200-0147	1	INS.-NYLON		1200-0542	1	SOCKET-TEST
S3	3101-1857	1	SW.-SLIDE	CR1-51	1910-0047	51	DIODE
					10529-20014	1	BD-BLANK

Part of Figure 2. 10529A Component Locator

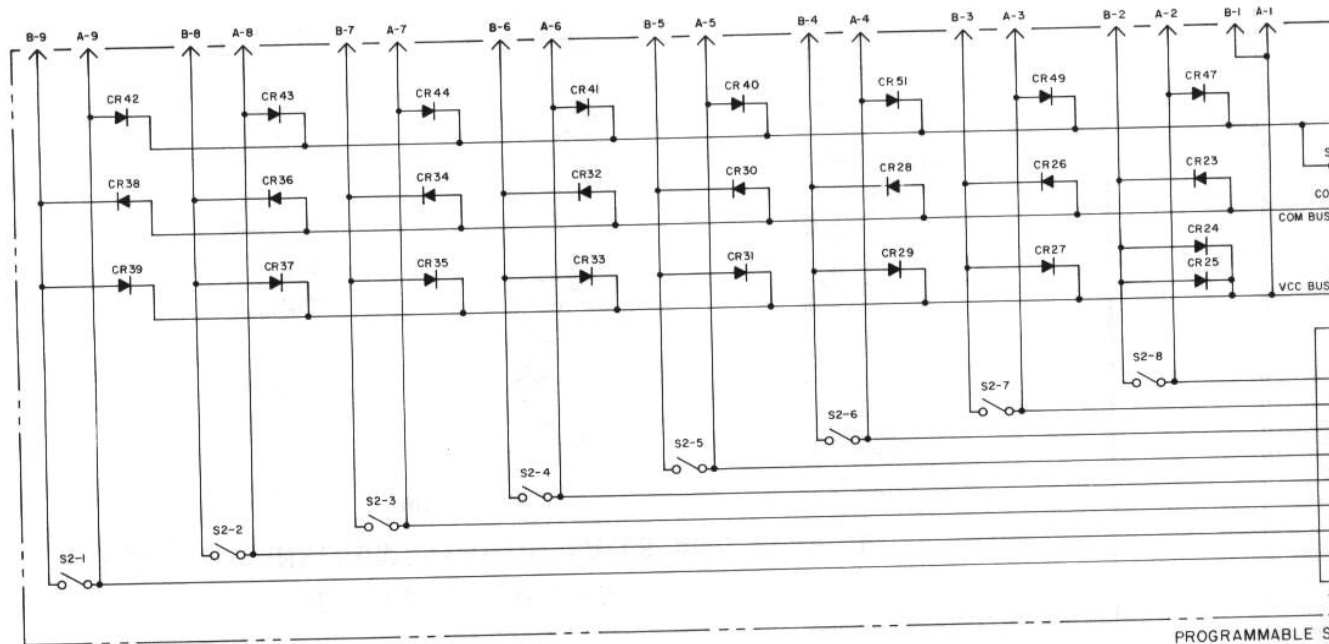


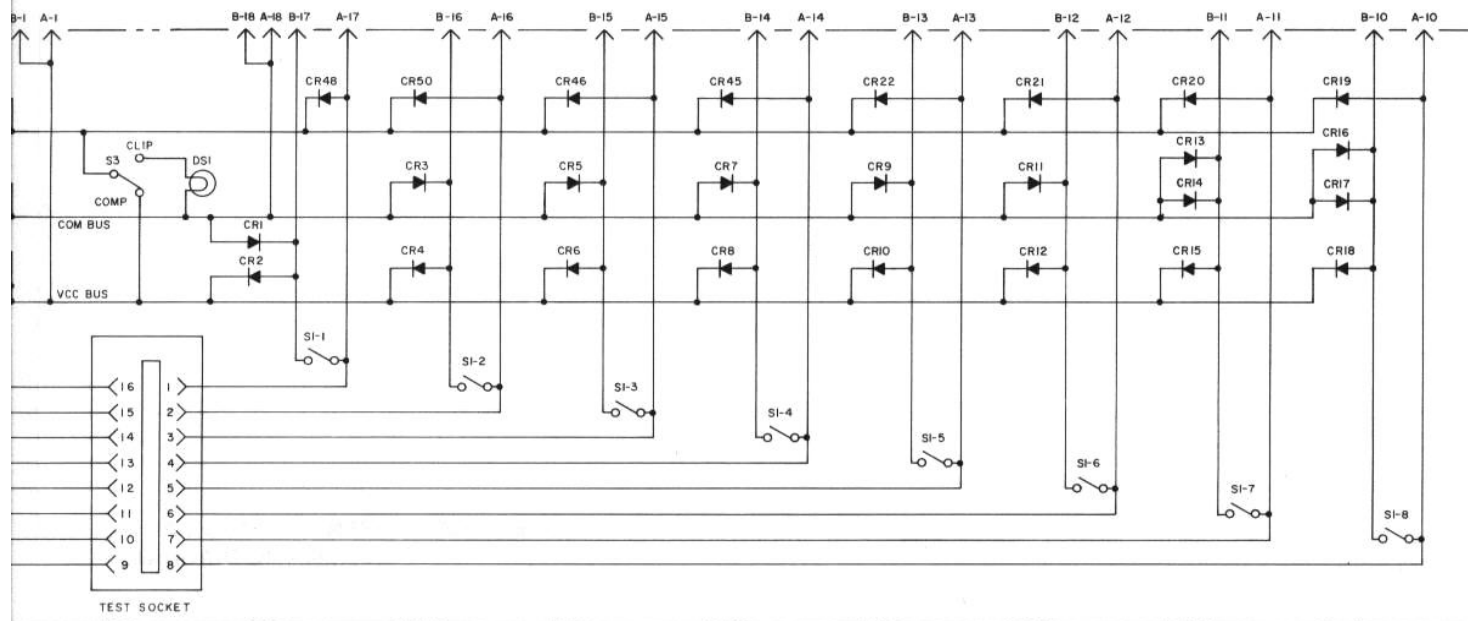
**Figure 2**  
**10529A COMPONENT LOCATOR AND**  
**SCHEMATIC DIAGRAM**

(See Page 7)

Model 10529A

Figure 2. 10529A Component





# HEWLETT · PACKARD

## ELECTRONIC INSTRUMENTATION SALES AND SERVICE

### UNITED STATES

#### ALABAMA

P.O. Box 4207  
2003 Byrd Spring Road S.W.  
Huntsville 35802  
Tel: (205) 881-4591  
TWX: 810-726-2204

#### ARIZONA

2336 E. Magnolia St.  
Phoenix 85034  
Tel: (602) 252-5061  
TWX: 910-951-1330

5737 East Broadway  
Tucson 85716  
Tel: (602) 298-2111  
TWX: 910-952-1162

#### CALIFORNIA

1430 East Orangethorpe Ave.  
Fullerton 92631  
Tel: (714) 870-1000

3939 Lankershim Boulevard  
North Hollywood 91604  
Tel: (213) 877-1282  
TWX: 910-499-2170

1101 Embarcadero Road  
Palo Alto 94303  
Tel: (415) 327-6500  
TWX: 910-373-1280

2220 Watt Ave.  
Sacramento 95825  
Tel: (916) 482-1463  
TWX: 910-367-2092

9606 Aero Drive  
San Diego 92123  
Tel: (714) 279-3200  
TWX: 910-335-2000

#### COLORADO

7965 East Prentice  
Englewood 80110  
Tel: (303) 771-3455  
TWX: 910-935-0705

#### CONNECTICUT

508 Tolland Street  
East Hartford 06108  
Tel: (203) 289-9394  
TWX: 710-425-3416

111 East Avenue  
Norwalk 06851  
Tel: (203) 853-1251  
TWX: 710-468-3750

#### FLORIDA

P.O. Box 24210  
2806 W. Oakland Park Blvd.  
Ft. Lauderdale 33307  
Tel: (305) 731-2020  
TWX: 510-955-4099

P.O. Box 20007  
Herndon Station 32814  
621 Commonwealth Avenue  
Orlando  
Tel: (305) 841-3970  
TWX: 810-850-0113

#### GEORGIA

P.O. Box 28234  
450 Interstate North  
Atlanta 30328  
Tel: (404) 436-6181  
TWX: 810-766-4890

#### ILLINOIS

5500 Howard Street  
Skokie 60076  
Tel: (312) 677-0400  
TWX: 910-223-3613

#### INDIANA

3839 Meadows Drive  
Indianapolis 46205  
Tel: (317) 546-4891  
TWX: 810-341-3263

#### LOUISIANA

P.O. Box 856  
1942 Williams Boulevard  
Kenner 70062  
Tel: (504) 721-6201  
TWX: 810-555-5524

#### MARYLAND

6707 Whitestone Road  
Baltimore 21207  
Tel: (301) 944-5400  
TWX: 710-862-9157

P.O. Box 1648  
2 Choke Cherry Road  
Rockville 20850  
Tel: (301) 948-6370  
TWX: 710-828-9684

#### MASSACHUSETTS

32 Hartwell Ave.  
Lexington 02173  
Tel: (617) 861-8960  
TWX: 710-326-6904

#### MICHIGAN

24315 Northwestern Highway  
Southfield 48075  
Tel: (313) 353-9100  
TWX: 810-224-4882

#### MINNESOTA

2459 University Avenue  
St. Paul 55114  
Tel: (612) 645-9461  
TWX: 910-563-3734

#### MISSOURI

11131 Colorado Ave.  
Kansas City 64137  
Tel: (816) 763-8000  
TWX: 910-771-2087

2812 South Brentwood Blvd.  
St. Louis 63144  
Tel: (314) 962-5000  
TWX: 910-760-1670

#### NEW JERSEY

W. 120 Century Road  
Paramus 07652  
Tel: (201) 265-5000  
TWX: 710-990-4951

1060 N. Kings Highway  
Cherry Hill 08034  
Tel: (609) 667-4000  
TWX: 710-892-4945

**NEW MEXICO**

P.O. Box 8366  
Station C  
6501 Lomas Boulevard N.E.  
Albuquerque 87108  
Tel: (505) 265-3713  
TWX: 910-989-1665

156 Wyatt Drive  
Las Cruces 88001  
Tel: (505) 526-2485  
TWX: 910-983-0550

**NEW YORK**

1702 Central Avenue  
Albany 12205  
Tel: (518) 869-8462  
TWX: 710-441-8270

1219 Campville Road  
Endicott 13760  
Tel: (607) 754-0050  
TWX: 510-252-0890

82 Washington Street  
Poughkeepsie 12601  
Tel: (914) 454-7330  
TWX: 510-248-0012

39 Saginaw Drive  
Rochester 14623  
Tel: (716) 473-9500  
TWX: 510-253-5981

1025 Northern Boulevard  
Roslyn, Long Island 11576  
Tel: (516) 869-8400  
TWX: 510-223-0811

5858 East Molloy Road  
Syracuse 13211  
Tel: (315) 454-2486  
TWX: 710-541-0482

**NORTH CAROLINA**

P.O. Box 5188  
1923 North Main Street  
High Point 27262  
Tel: (919) 885-8101  
TWX: 510-926-1516

**OHIO**

25575 Center Ridge Road  
Cleveland 44145  
Tel: (216) 835-0300  
TWX: 810-427-9129

3460 South Dixie Drive  
Dayton 45439  
Tel: (513) 298-0351  
TWX: 810-459-1925

1120 Morse Road  
Columbus 43229  
Tel: (614) 846-1300

**OKLAHOMA**

2919 United Founders Boulevard  
Oklahoma City 73112  
Tel: (405) 848-2801  
TWX: 910-830-6862

**OREGON**

West Hills Mall, Suite 158  
4475 S.W. Scholls Ferry Road  
Portland 97225  
Tel: (503) 292-9171  
TWX: 910-464-6103

**PENNSYLVANIA**

2500 Moss Side Boulevard  
Monroeville 15146  
Tel: (412) 271-0724  
TWX: 710-797-3650

1021 8th Avenue  
King of Prussia Industrial Park  
King of Prussia 19406  
Tel: (215) 265-7000  
TWX: 510-660-2670

**RHODE ISLAND**

873 Waterman Ave.  
East Providence 02914  
Tel: (401) 434-5555  
TWX: 710-381-7573

**TEXAS**

P.O. Box 1270  
201 E. Arapaho Rd.  
Richardson 75080  
Tel: (214) 231-6101  
TWX: 910-867-4723

P.O. Box 22813  
6300 Westpark Drive  
Suite 100  
Houston 77027  
Tel: (713) 781-6000  
TWX: 910-881-2645

231 Billy Mitchell Road  
San Antonio 78226  
Tel: (512) 434-4171  
TWX: 910-871-1170

**UTAH**

2890 South Main Street  
Salt Lake City 84115  
Tel: (801) 487-0715  
TWX: 910-925-5681

**VERMONT**

P.O. Box 2287  
Kennedy Drive  
South Burlington 05401  
Tel: (802) 658-4455  
TWX: 510-299-0025

**VIRGINIA**

P.O. Box 6514  
2111 Spencer Road  
Richmond 23230  
Tel: (703) 285-3431  
TWX: 710-956-0157

**WASHINGTON**

433-108th N.E.  
Bellevue 98004  
Tel: (206) 454-3971  
TWX: 910-443-2303

**\*WEST VIRGINIA**

Charleston  
Tel: (304) 768-1232

**FOR U.S. AREAS NOT****LISTED:**

Contact the regional office nearest you: Atlanta, Georgia...  
North Hollywood, California...  
Paramus, New Jersey...  
Skokie, Illinois. Their complete addresses are listed above.

\*Service Only

## CANADA

### ALBERTA

Hewlett-Packard (Canada) Ltd.  
11745 Jasper Ave.  
Edmonton  
Tel: (403) 482-5561  
TWX: 610-831-2431

### BRITISH COLUMBIA

Hewlett-Packard (Canada) Ltd.  
4519 Canada Way  
North Burnaby 2  
Tel: (604) 433-8213  
TWX: 610-922-5059

### MANITOBA

Hewlett-Packard (Canada) Ltd.  
511 Bradford Ct.  
St. James  
Tel: (204) 786-7581  
TWX: 610-671-3531

### NOVA SCOTIA

Hewlett-Packard (Canada) Ltd.  
2745 Dutch Village Rd.  
Suite 203  
Halifax  
Tel: (902) 455-0511  
TWX: 610-271-4482

### ONTARIO

Hewlett-Packard (Canada) Ltd.  
880 Lady Ellen Place  
Ottawa 3  
Tel: (613) 722-4223  
TWX: 610-562-1952

Hewlett-Packard (Canada) Ltd.  
50 Galaxy Blvd.  
Rexdale  
Tel: (416) 677-9611  
TWX: 610-492-4246

### QUEBEC

Hewlett-Packard (Canada) Ltd.  
275 Hymus Boulevard  
Pointe Claire  
Tel: (514) 697-4232  
TWX: 610-422-3022  
Telex: 01-20607

**FOR CANADIAN AREAS NOT LISTED:**  
Contact Hewlett-Packard (Canada) Ltd. in Pointe Claire, at the complete address listed above.

## CENTRAL AND SOUTH AMERICA

### ARGENTINA

Hewlett-Packard Argentina  
S.A.C.e.  
Lavalle 1171 - 3  
Buenos Aires  
Tel: 35-0436, 35-0627, 35-0431  
Telex: 012-1009  
Cable: HEWPACKARG

### BRAZIL

Hewlett-Packard Do Brasil  
I.E.C. Ltda.  
Rua da Matriz 29  
Botafogo 2C-02  
Rio de Janeiro, GB  
Tel: 246-4417  
Cable: HEWPACK Rio de Janeiro

### CHILE

Héctor Calcagni y Cia. Ltda.  
Bustos, 1932-3er Piso  
Casilla 13942  
Santiago  
Tel: 4-2396  
Cable: Calcagni Santiago

### COLOMBIA

Instrumentacion  
Henrik A. Langebaek & Kier  
Ltda.  
Carrera 7 No. 48-59  
Apartado Aereo 6287  
Bogota, 1 D.E.  
Tel: 45-78-06, 45-55-46  
Cable: AARIS Bogota  
Telex: 044-400

### MEXICO

Hewlett-Packard Mexicana, S.A.  
de C.V.  
Moras 439  
Col. del Valle  
Mexico 12, D.F.  
Tel: 575-46-49, 575-80-20,  
575-80-30

### PANAMA

Electrónico Balboa, S.A.  
P.O. Box 4929  
Ave. Manuel Espinosa No. 13-50  
Bldg. Alina  
Panama City  
Tel: 230833  
Telex: 3481003, Curundu.  
Canal Zone  
Cable: ELECTRON Panama City

### PERU

Compania Electro Medica S.A.  
Ave. Enrique Canaval 312  
San Isidro  
Casilla 1030  
Lima  
Tel: 22-3900  
Cable: ELMED Lima

### PUERTO RICO

San Juan Electronics, Inc.  
P.O. Box 5167  
Ponce de Leon 154  
Pda. 3-Pta. de Tierra  
San Juan 00906  
Tel: (809) 725-3342, 722-3342  
Cable: SATRONICS San Juan  
Telex: SATRON 3450 332

### VENEZUELA

Hewlett-Packard De Venezuela  
C.A.  
Apartado 50933  
Caracas  
Tel: 71.88.05, 71.88.69, 71.99.30  
71.88.76, 71.82.05  
Cable: HEWPACK Caracas

### FOR AREAS NOT LISTED,

**CONTACT:**  
Hewlett-Packard  
INTERCONTINENTAL  
3200 Hillview Ave.  
Palo Alto, California 94304  
Tel: (415) 493-1501  
TWX: 910-373-1267  
Cable: HEWPACK Palo Alto  
Telex: 034-8461



## EUROPE

### AUSTRIA

Unilabor GmbH  
Wissenschaftliche Instrumente  
Rummelhardtgasse 6  
P.O. Box 33  
A-1095 Vienna  
Tel: (222) 42 61 81, 43 13 94  
Cable: LABORINSTRUMENT  
Vienna  
Telex: 75 762

### FRANCE

Hewlett-Packard France  
Quartier de Courtaboeuf  
Boite Postale No. 6  
91 Orsay  
Tel: 1-920 88 01  
Cable: HEWPACK Orsay  
Telex: 60048

### GERMANY

Hewlett-Packard Vertriebs-GmbH  
Berliner Strasse 117  
Postfach 560/40  
D6 Nieder-Eschbach Fm 56  
Tel: (0611) 50 10 64  
Cable: HEWPACKSA Frankfurt  
Telex: 41 32 49 FRA

### GREECE

Kostas Karayannis  
18, Ermou Street  
Athens 126  
Tel: 230301.3.5  
Cable: RAKAR Athens  
Telex: 21 59 62 RAKAR GR

### ITALY

Hewlett-Packard Italiana S.p.A.  
Via Amerigo Vespucci 2  
20124 Milano  
Tel: (2) 6251 (10 lines)  
Cable: HEWPACKIT Milan  
Telex: 32046

### NETHERLANDS

Hewlett-Packard Benelux N.V.  
Weerdestein 117  
P.O. Box 7825  
Amsterdam, 211  
Tel: 020-42 77 77  
Cable: PALOBEN Amsterdam  
Telex: 13 216

### SPAIN

Ataio Ingenieros SA  
Enrique Larreta 12  
Madrid, 16  
Tel: 215 35 43  
Cable: TELEATAIO Madrid  
Telex: 27249E

### SWEDEN

Hewlett-Packard Sverige AB  
Enighetsvägen 1-3  
Fack  
S-161 20 Bromma 20  
Tel: (08) 98 12 50  
Cable: MEASUREMENTS  
Stockholm  
Telex: 10721

### SWITZERLAND

Hewlett-Packard Schweiz A.G.  
Rue du Bois-du-Lan 7  
1217 Meyrin 2 Geneva  
Tel: (022) 41 54 00  
Cable: HEWPACKSA Geneva  
Telex: 2 24 86

### UNITED KINGDOM

Hewlett-Packard Ltd.  
224 Bath Road  
Slough, Bucks  
Tel: Slough (0753) 33341  
Cable: HEWPAC Slough  
Telex: 84413

### YUGOSLAVIA

Belram S.A.  
83 avenue des Mimosas  
Brussels 1150, Belgium  
Tel: 34 33 32, 34 26 19  
Cable: BELRAMEL Brussels  
Telex: 21790

### SOCIALIST COUNTRIES

#### PLEASE CONTACT:

Correspondence Office for  
Eastern Europe  
Innstrasse 23/2  
Postfach  
A1204 Vienna, Austria  
Tel: (222) 3366 06/09  
Cable: HEWPACK Vienna  
Telex: 75923

### ALL OTHER EUROPEAN

#### COUNTRIES CONTACT:

Hewlett-Packard S.A.  
Rue du Bois-du-Lan 7  
1217 Meyrin 2 Geneva  
Switzerland  
Tel: (022) 41 54 00  
Cable: HEWPACKSA Geneva  
Telex: 2 24 86



**MANUAL PART NUMBER 10529-90007**  
**MICROFICHE PART NUMBER 10529-90008**

**PRINTED IN U.S.A.**